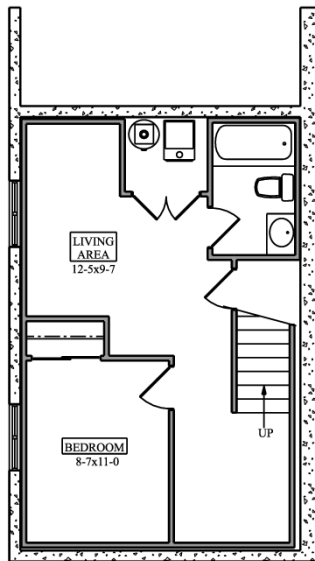




**SAINT
AUBYN
HOMES**

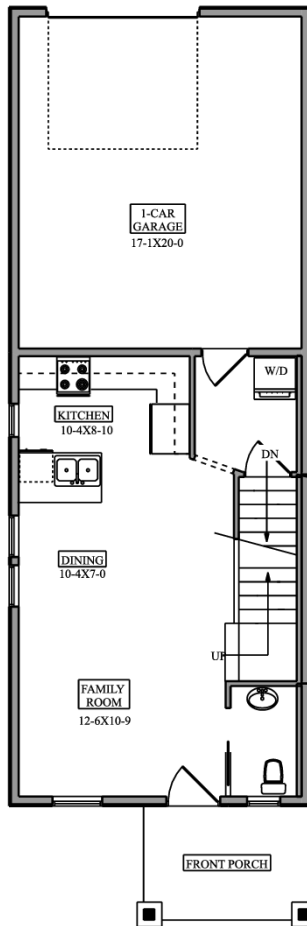
SAGE BRUSH

1249 finished square feet
plus 448 square feet basement

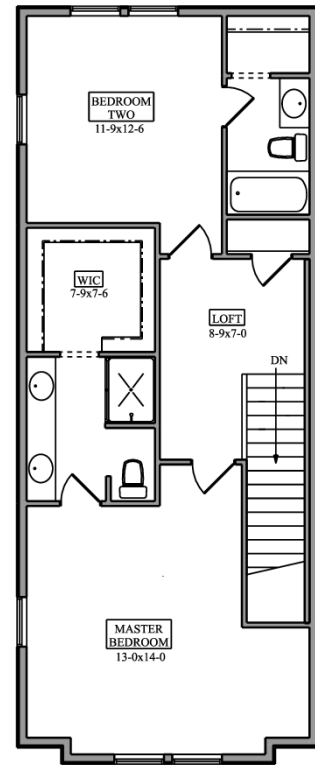


UNFINISHED

LOWER FLOOR
448 SQ FT



MAIN FLOOR
495 SQ FT



UPPER FLOOR
754 SQ FT

Floor plans shown are not to scale. Plans are subject to change without notice or obligation.
Some features shown are optional. Verify accuracy and revisions prior to purchase.



Rich Flanery Team
Pre-Approval **970.577.9200**

Saint Aubyn Homes
Sales 970.297.7770

landin@saintaubynhomes.com
www.saintaubynhomes.com

