



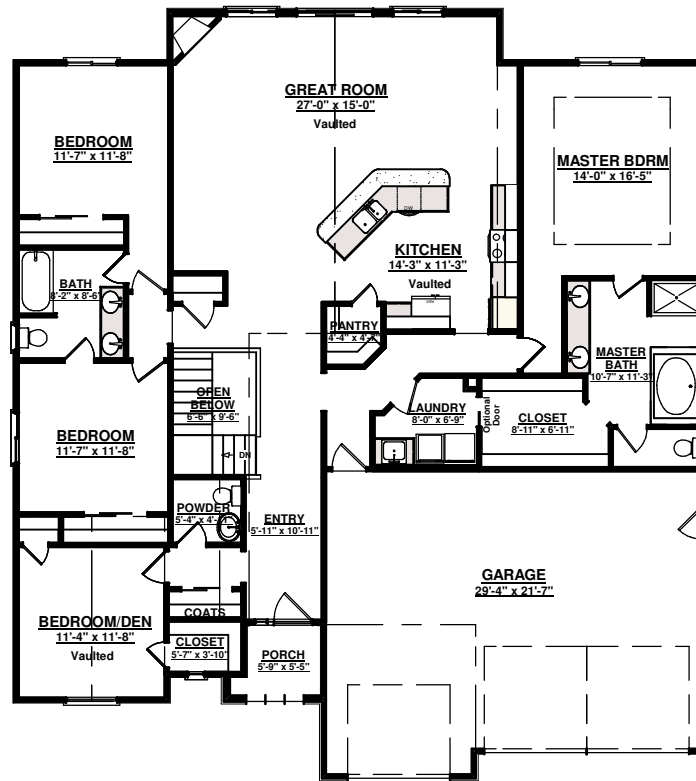
TRUMAN

Plan # 2212R

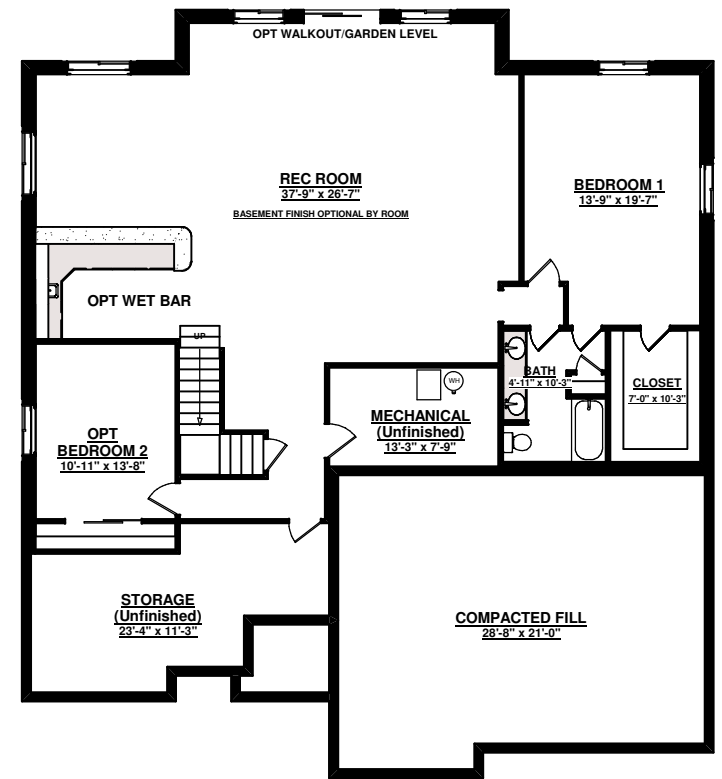
Some features shown are optional



SAINT AUBYN HOMES



MAIN LEVEL FLOOR PLAN
2212 sq ft



BASEMENT FLOOR PLAN
2221 sq ft

3,882 sq ft w/BASIC BASEMENT FINISH, 4,433 sq ft total

*FIVE BEDROOM w/BASIC BASEMENT FINISH
OPTIONAL SIXTH BEDROOM*

3 1/2 BATHS w/5 PC MASTER

STANDARD 3 BAY GARAGE

VAULTED OPEN LIVING AREAS

Floor plans shown are not to scale. Plans are subject to change without notice due to code changes and availability of materials. Some features shown are optional. Verify accuracy and revisions with sales personnel prior to purchase.