



WYNDHAM

Plan # 1652R

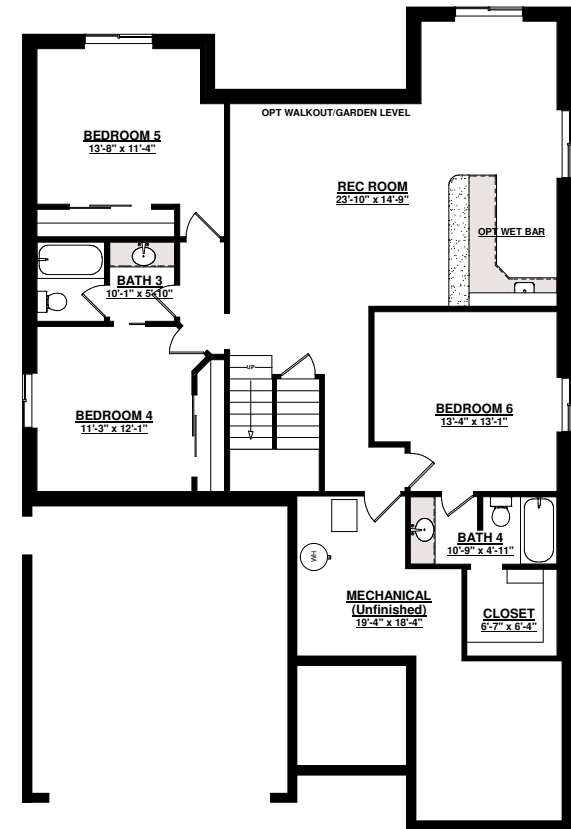
Some features shown are optional



SAINT AUBYN HOMES



MAIN LEVEL FLOOR PLAN
1711 sq ft



BASEMENT FLOOR PLAN
1782 sq ft

3,439 sq ft total

FOUR BEDROOMS plus FLEX ROOM FOR DEN OR 5th BEDROOM

4 BATHS w/5 PC MASTER

OPTIONAL THIRD GARAGE BAY

OPEN LIVING AREAS

TRAY and VAULTED CEILINGS

Floor plans shown are not to scale. Plans are subject to change without notice due to code changes and availability of materials. Some features shown are optional. Verify accuracy and revisions with sales personnel prior to purchase.