



**Plan # 1581TS**  
Some features shown are optional

# TABOR

1,654 sq ft plus 591 sq ft BASEMENT  
(Basement Finish Optional)

OPEN MAIN LEVEL LIVING

FOUR BEDROOMS, 3 1/2 BATHS

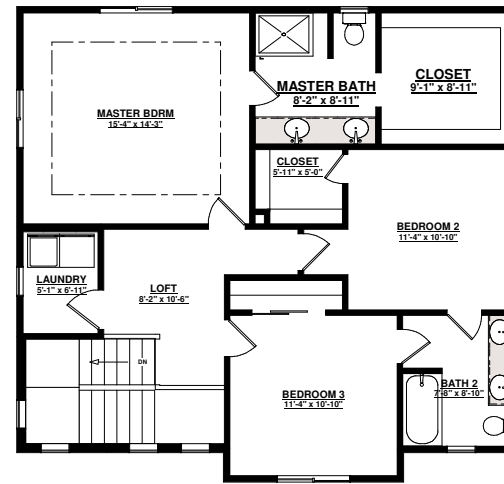
LAUNDRY and LOFT AREA UP

VAULTED MASTER RETREAT w/OPT  
FIVE Pc BATH

OPTIONAL THIRD GARAGE BAY

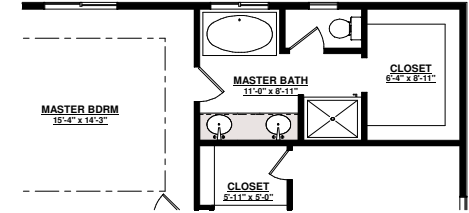


SAINT AUBYN HOMES

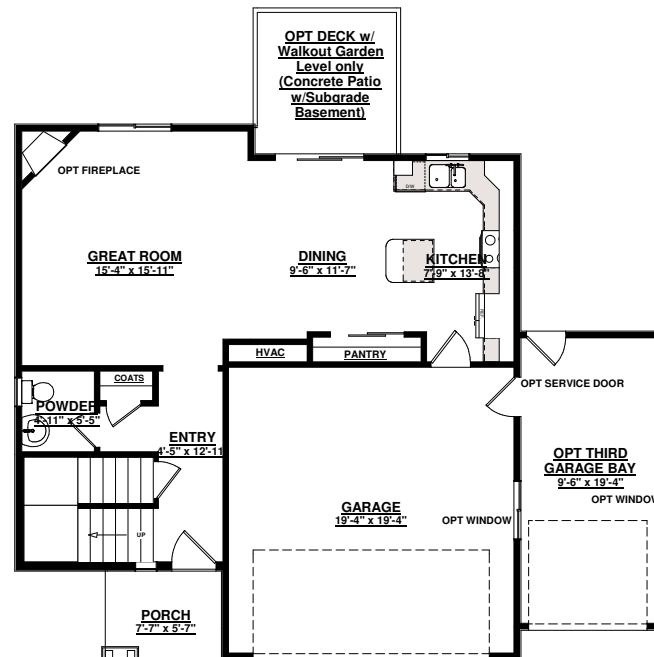


**UPPER LEVEL FLOOR PLAN**

947 sq ft

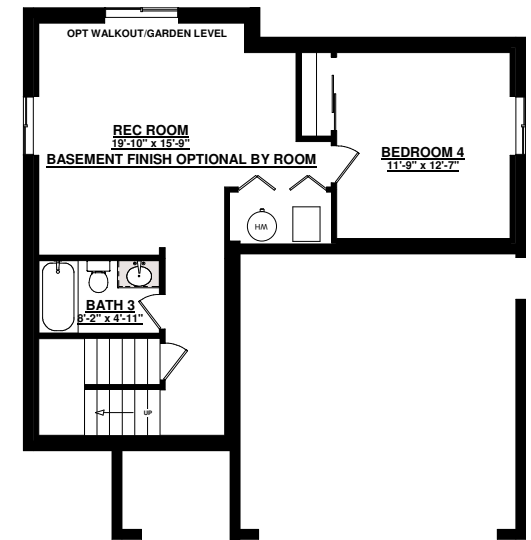


**OPT 5 pc MASTER BATH**



**MAIN LEVEL FLOOR PLAN**

707 sq ft



**BASEMENT FLOOR PLAN**

591 sq ft

Floor plans shown are not to scale. Plans are subject to change without notice due to code changes and availability of materials. Some features shown are optional. Verify accuracy and revisions with sales personnel prior to purchase.