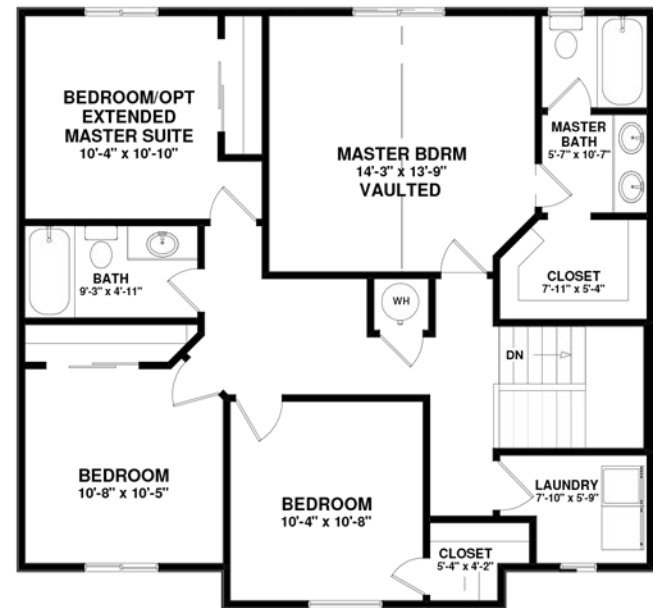




Shown with Optional Stone Veneer



**UPPER LEVEL FLOOR PLAN**

990 sq ft

# PLATEAU

Plan # 1688TS

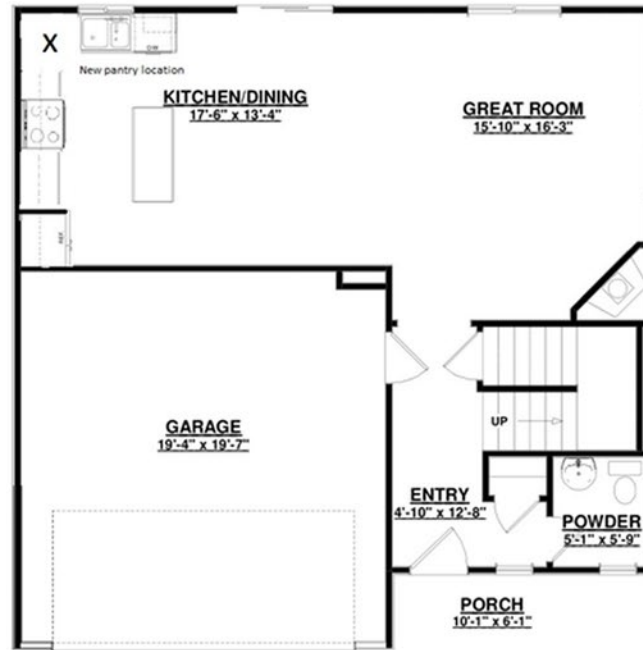
1,688 sq ft

FOUR BEDROOM w/VAULTED MASTER

HALLWAY DESK AREA

2 1/2 BATHS w/LAUNDRY UP

OPEN LIVING



**MAIN LEVEL FLOOR PLAN**

641 sq ft

SAINT AUBYN HOMES

Floor plans shown are not to scale. Plans are subject to change without notice due to code changes and availability of materials. Some features shown are optional. Verify accuracy and revisions with sales personnel prior to purchase.