

**MAIN LEVEL FLOOR PLAN**  
1207 sq ft

*2,484 sq ft total*

*FOUR BEDROOMS*

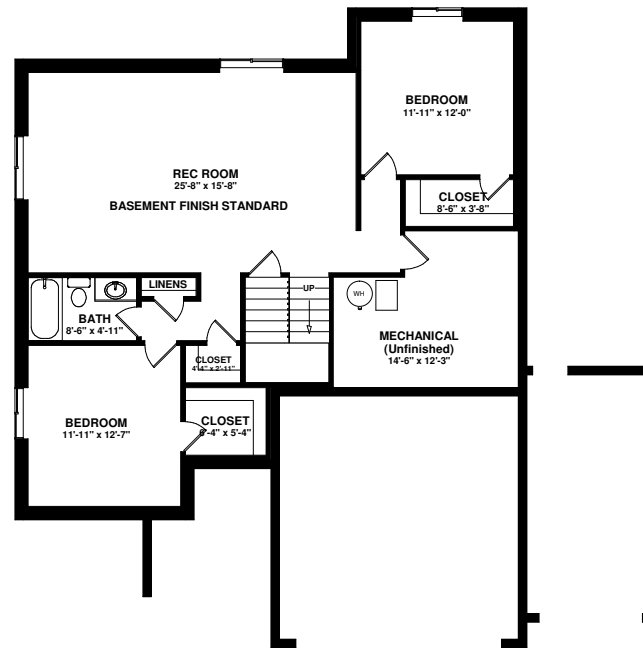
*THREE BATHS, FIVE PIECE MASTER*

*VAULTED CEILINGS*

*OPEN LIVING*

# LOWELL

Plan # 1207R



**BASEMENT FLOOR PLAN**  
1275 sq ft



SAINT AUBYN HOMES

Floor plans shown are not to scale. Plans are subject to change without notice due to code changes and availability of materials. Some features shown are optional. Verify accuracy and revisions with sales personnel prior to purchase.