



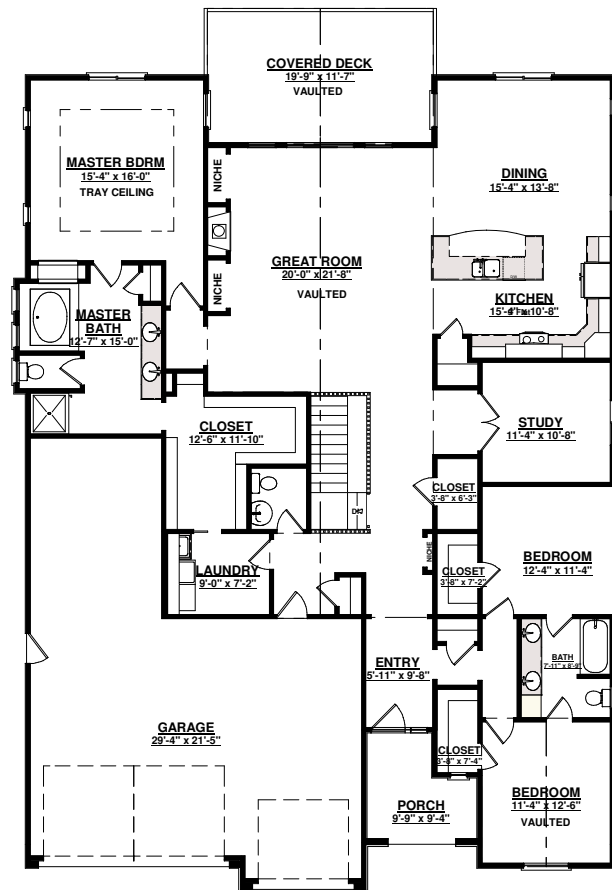
LINCOLN

Plan # 2577R

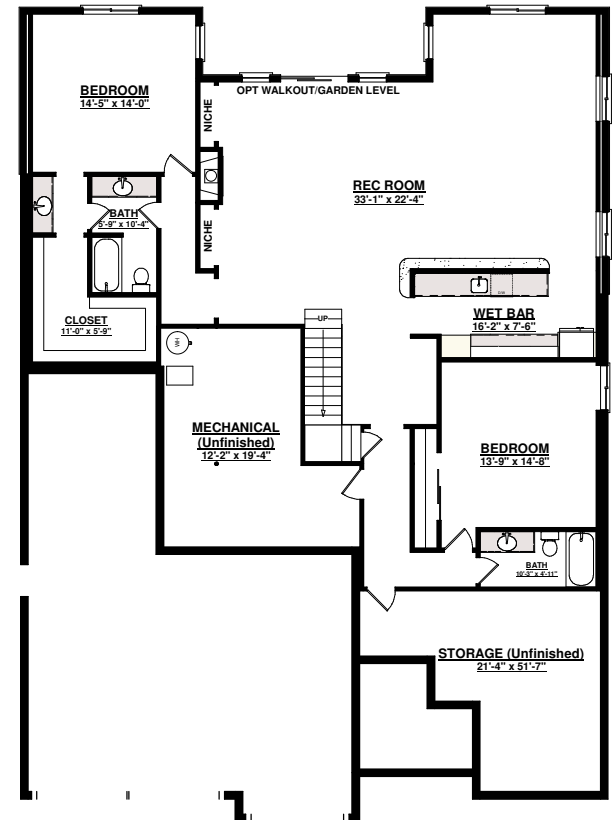
Some features shown are optional



SAINT AUBYN HOMES



MAIN LEVEL FLOOR PLAN
2577 sq ft



BASEMENT FLOOR PLAN
2560 sq ft

**4,493 sq ft w/STANDARD BASEMENT FINISH,
5,137 sq ft total**

**FIVE BEDROOMS and STUDY, 4 1/2 BATHS
w/5 PC MASTER**

GOURMET KITCHEN w/ SPACIOUS ISLAND

**STANDARD 3 BAY GARAGE plus TANDEM
BAY**

VAULTED OPEN LIVING AREAS

Floor plans shown are not to scale. Plans are subject to change without notice due to code changes and availability of materials. Some features shown are optional. Verify accuracy and revisions with sales personnel prior to purchase.