



Shown with Optional Stone Veneer



**UPPER LEVEL FLOOR PLAN**

**892 sq ft**

# GUNNISON

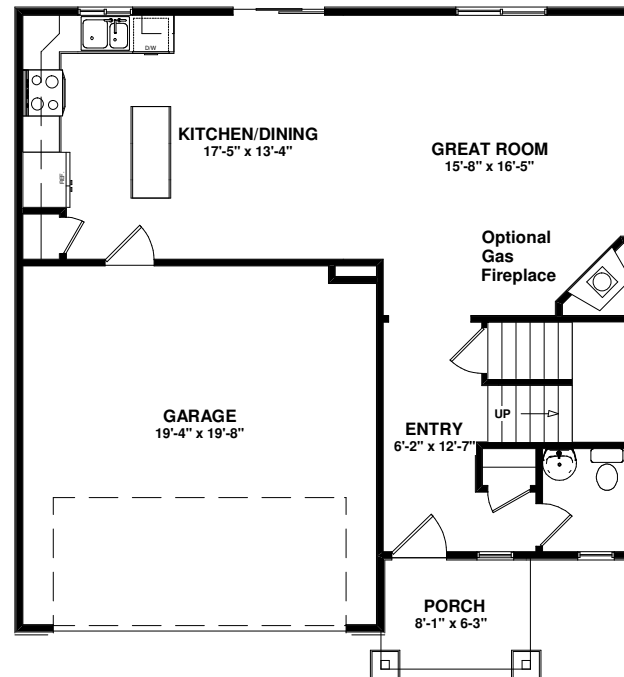
Plan # 1590TS

1,590 sq ft

THREE BEDROOM w/VAULTED MASTER

2 1/2 BATHS

OPEN LIVING



**MAIN LEVEL FLOOR PLAN**

**698 sq ft**



SAINT AUBYN HOMES

Floor plans shown are not to scale. Plans are subject to change without notice due to code changes and availability of materials. Some features shown are optional. Verify accuracy and revisions with sales personnel prior to purchase.