



Plan # 3095TS

Some features shown are optional

EISENHOWER

3,095 sq ft plus 1,593 sq ft BASEMENT
(Basement Finish Optional)

OPEN MAIN LEVEL LIVING,
FORMAL DINING

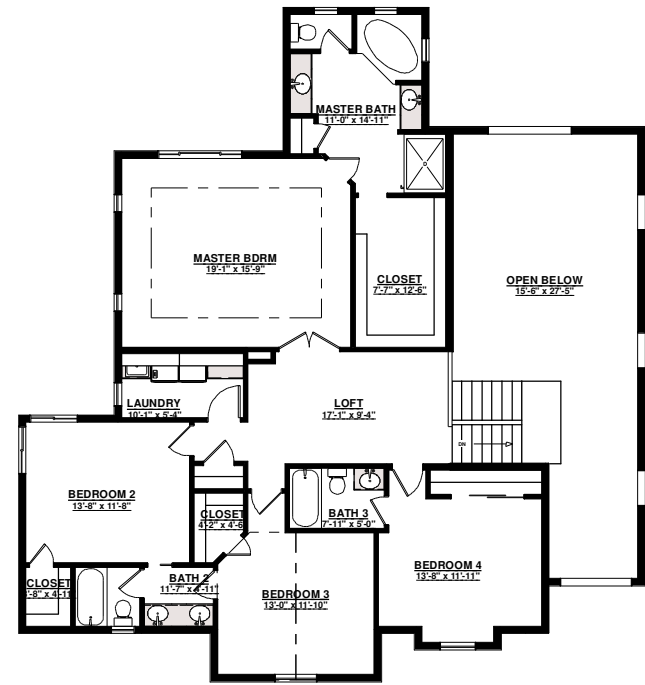
FOUR BEDROOMS, THREE BATHS,
LAUNDRY and LOFT AREA UP

MASTER RETREAT w/5 Pc BATH

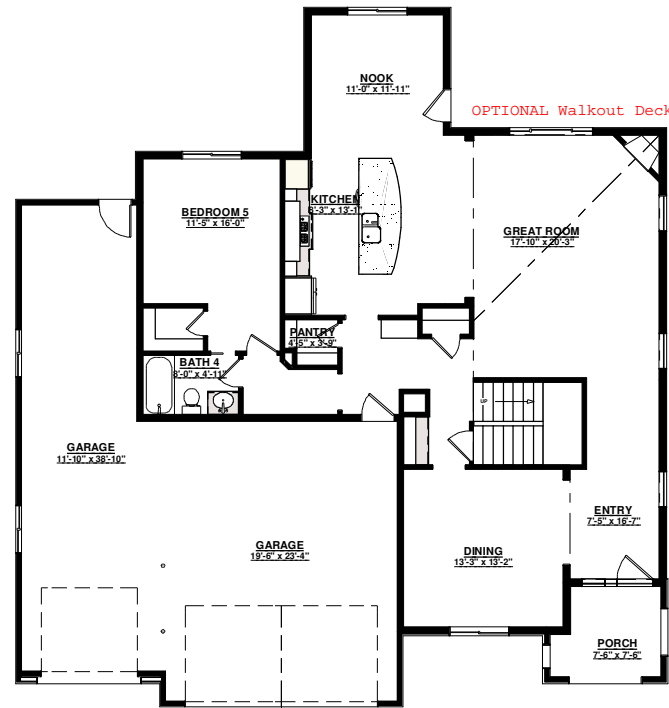
STD 3 BAY GARAGE w/TANDEM



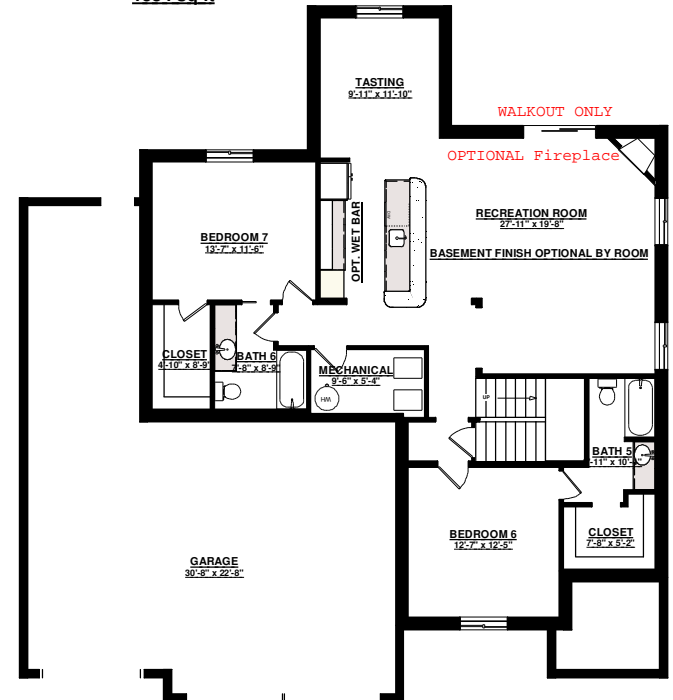
SAINT AUBYN HOMES



UPPER LEVEL FLOOR PLAN
1584 sq ft



MAIN LEVEL FLOOR PLAN
1511 sq ft



BASEMENT FLOOR PLAN
1593 sq ft
1542 sq ft finished optional

Floor plans shown are not to scale. Plans are subject to change without notice due to code changes and availability of materials. Some features shown are optional. Verify accuracy and revisions with sales personnel prior to purchase.