

**UPPER LEVEL FLOOR PLAN**  
1247 sq ft

# DELMON

Plan # 2101TS

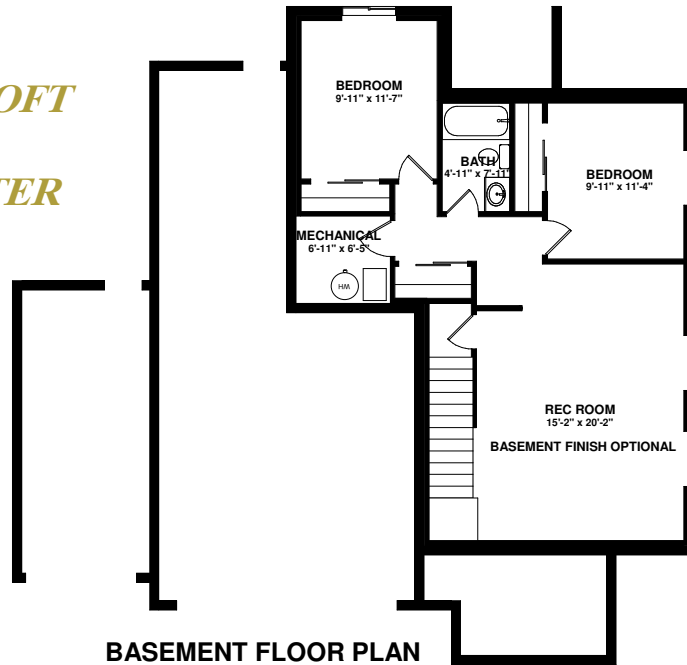
*2,101 sq ft plus 912 sq ft BASEMENT  
(Basement Finish Optional)*

*FOUR BEDROOMS UP w/LOFT*

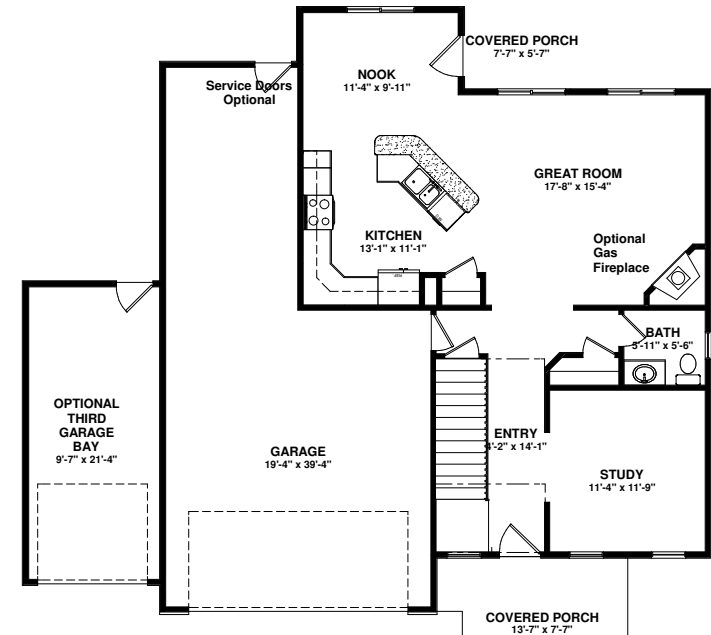
*2 1/2 BATHS, 5 PIECE MASTER*

*LAUNDRY UP*

*OPEN LIVING*



**BASEMENT FLOOR PLAN**  
912 sq ft



**MAIN LEVEL FLOOR PLAN**  
856 sq ft

**SAINT AUBYN HOMES**

Floor plans shown are not to scale. Plans are subject to change without notice due to code changes and availability of materials. Some features shown are optional. Verify accuracy and revisions with sales personnel prior to purchase.