



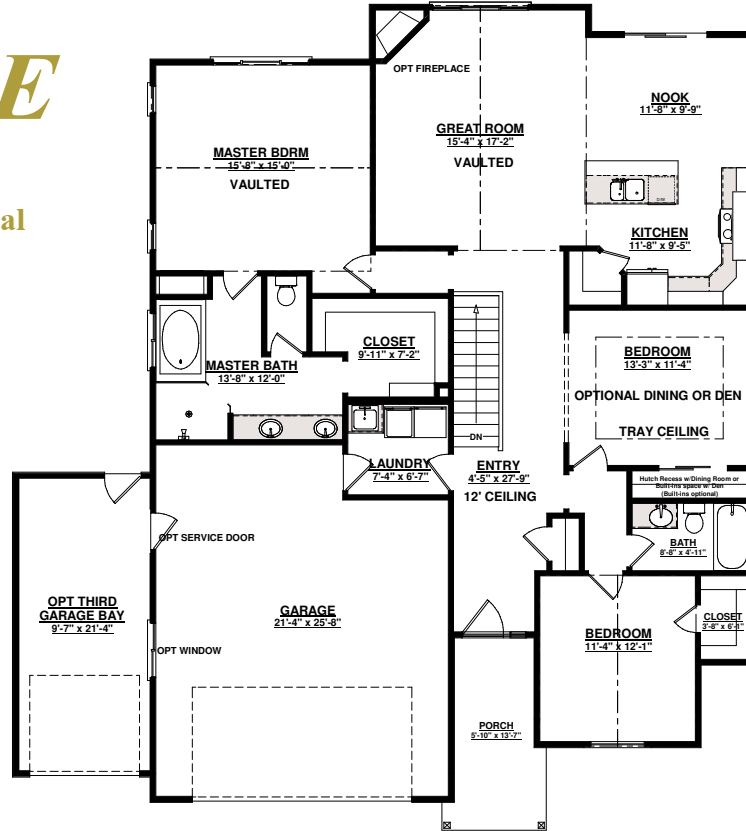
CASCADE

Plan # 1719R

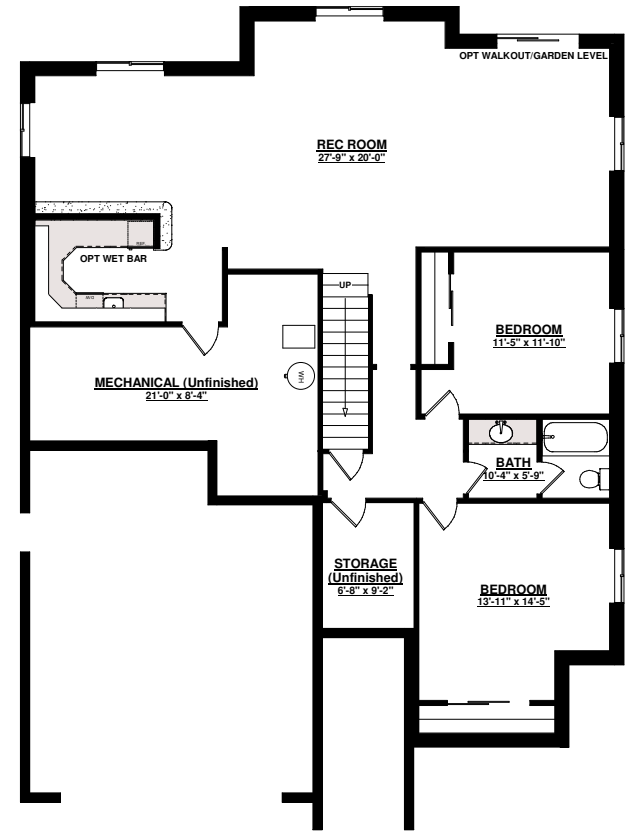
Some features shown are optional



SAINT AUBYN HOMES



MAIN LEVEL FLOOR PLAN
1760 sq ft



BASEMENT FLOOR PLAN
1767 sq ft

3,527 sq ft total

FOUR BEDROOMS plus FLEX ROOM FOR DEN, FORMAL DINING OR 5th BEDROOM

3 BATHS w/5 PC MASTER

OPTIONAL THIRD GARAGE BAY

VAULTED OPEN LIVING AREAS

Floor plans shown are not to scale. Plans are subject to change without notice due to code changes and availability of materials. Some features shown are optional. Verify accuracy and revisions with sales personnel prior to purchase.