



BURGESS

Plan # 2319TS
Some features shown are optional

2,319 sq ft plus 1,110 sq ft BASEMENT
(Basement Finish Optional)

OPEN TWO STORY GREAT ROOM

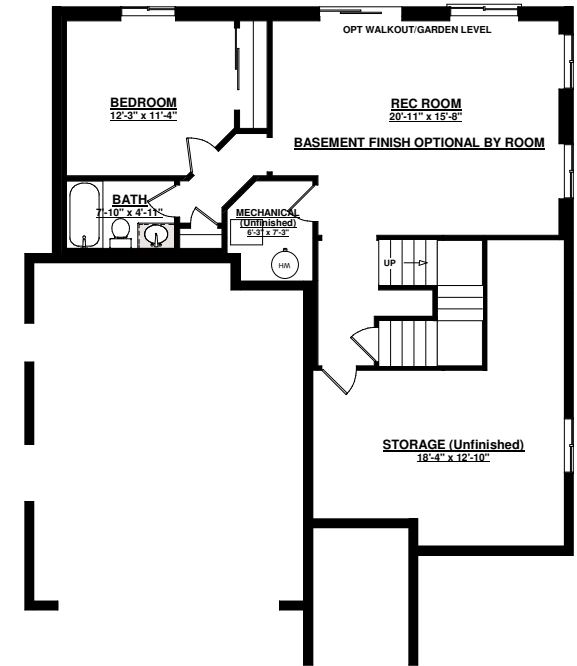
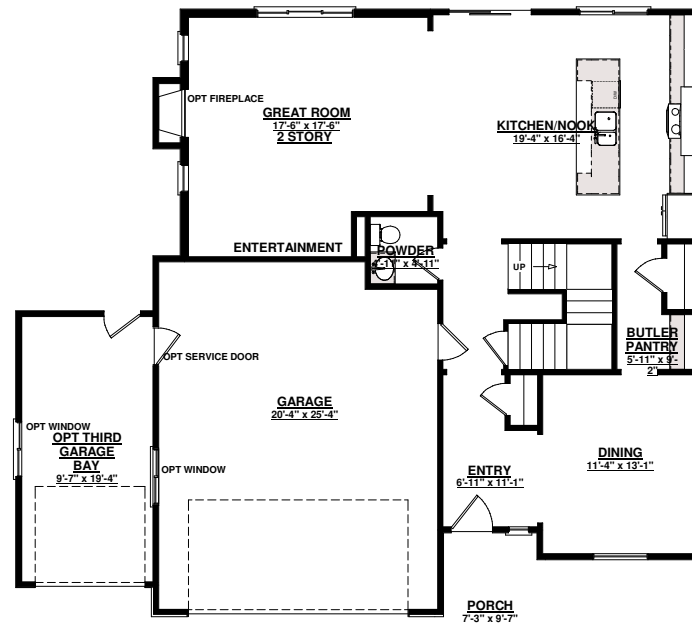
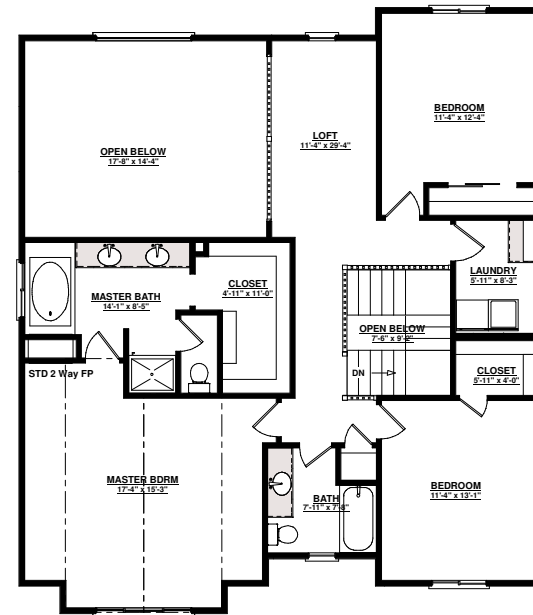
SPACIOUS KITCHEN W/BUTLER
PANTRY and FORMAL DINING

THREE BEDROOMS, TWO BATHS,
LAUNDRY and LOFT AREA UP
VAULTED MASTER RETREAT w/
FIVE Pc BATH

OPTIONAL THIRD GARAGE BAY



SAINT AUBYN HOMES



Floor plans shown are not to scale. Plans are subject to change without notice due to code changes and availability of materials. Some features shown are optional. Verify accuracy and revisions with sales personnel prior to purchase.