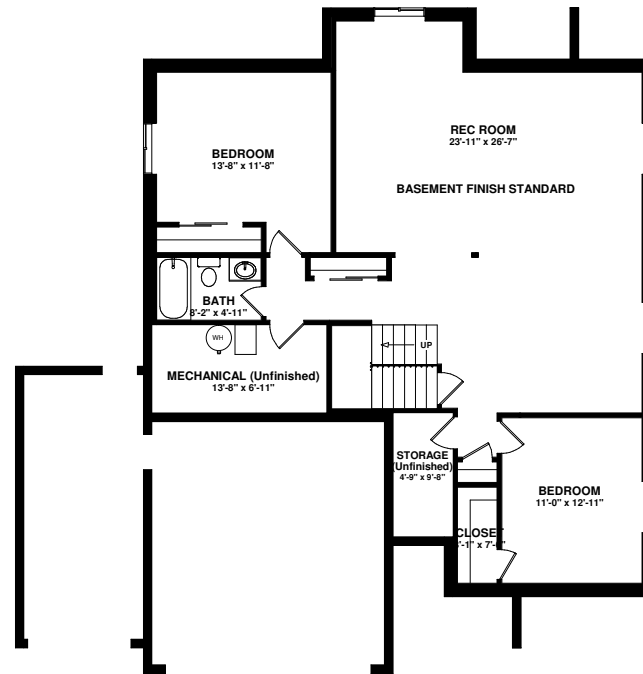


MAIN LEVEL FLOOR PLAN
1398 sq ft



BASEMENT FLOOR PLAN
1441 sq ft

BEAUMONT

Plan # 1398R-1



SAINT AUBYN HOMES

2,844 sq ft total

FIVE BEDROOMS, THREE BATHS

VAULTED CEILINGS

FIVE PC MASTER BATH

OPEN LIVING

Floor plans shown are not to scale. Plans are subject to change without notice due to code changes and availability of materials. Some features shown are optional. Verify accuracy and revisions with sales personnel prior to purchase.